

Figure 17. Fuel Tank, Pumps and Lines (Sheet 1 of 2)

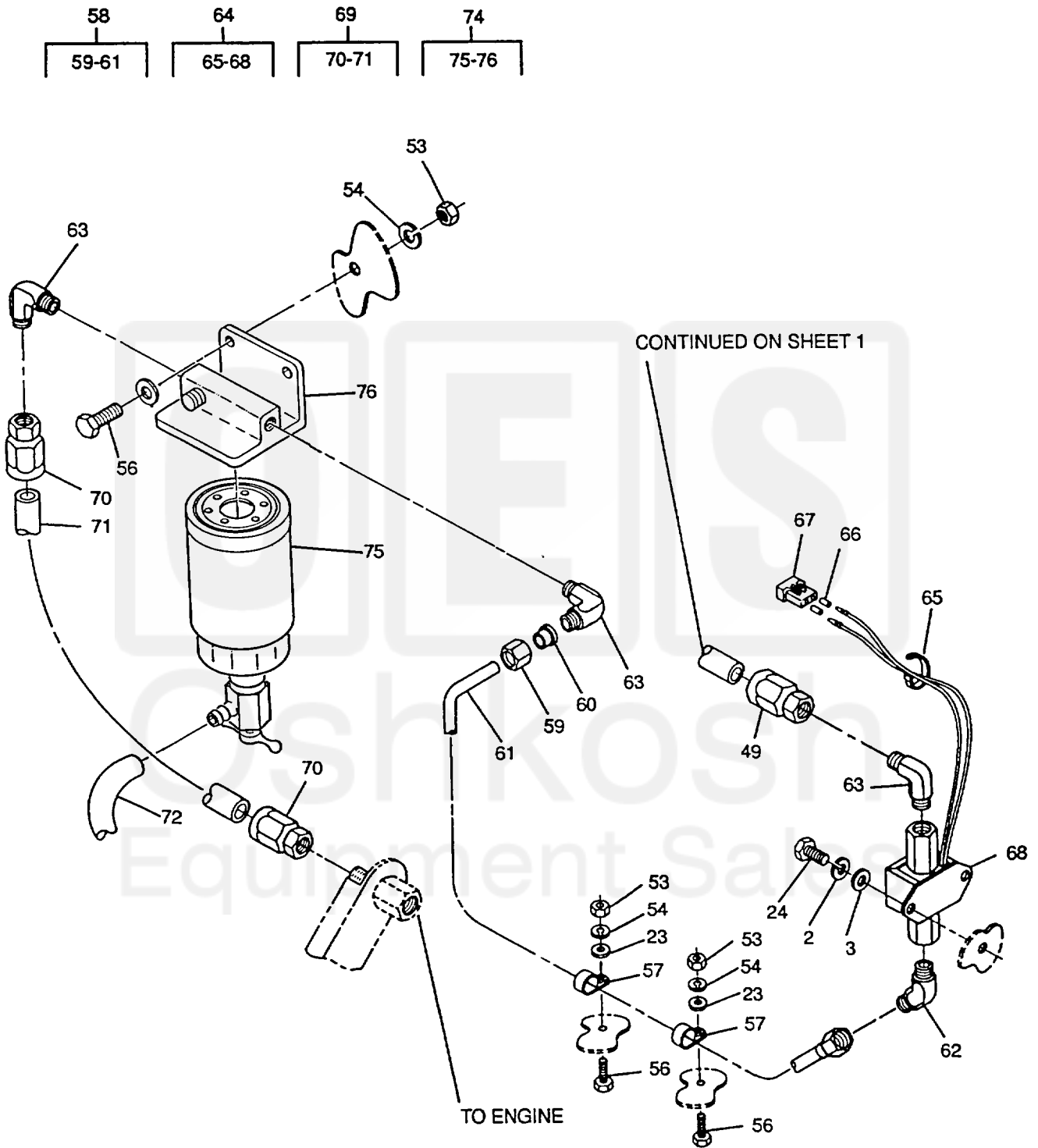


Figure 17. Fuel Tank Pumps and Lines (Sheet 2 of 2)

ARMY TM 9-6115-642-24P  
AIR FORCE TO 35C2-3-455-14  
MARINE CORPS TM 09247A/09248A-24P/3

(1) ITEM NO	(2) SMR CODE				(3) FSCM	(4) PART NUMBER	(5) DESCRIPTION AND USABLE ON CODE (UOC)	(6) QTY	(7) USMC QTY PER EQUIP
	a. ARMY	b. AIR FORCE	c. NAVY	d. USMC					
GROUP 07 - FUEL SYSTEM FIG. 17 FUEL TANK, PUMPS, AND LINES									
1	PAOZZ	PAOZZ		PAOZZ	96906	MS51492-14	.SCREW, MACHINE UOC: EMJ	15	15
2	PAOZZ	PAOZZ		PAOZZ	96906	MS35338-62	.WASHER, LOCK UOC: EMJ	19	59
3	PAOZZ	PAOZZ		PAOZZ	96906	MS51412-2	.WASHER, FLAT UOC' EMJ	19	87
4	PAOZZ	PAOZZ		PAOZZ	06555	127676	.TRANSMITTER, LIQUID	1	1
5	PAOZZ	PAOZZ		PAOZZ	30554	88-20286	.GASKET	3	3
6	AOOOO	AOO		AOOOO	30554	88-20483	.SWITCH ASSEMBLY, FU	1	1
7	PAOZZ	PAOZZ		PAOZZ	96906	MS3367-1-9	..STRAP, TIEDOWN, ELECT	1	1
8	PAOZZ	PAOZZ		PAOZZ	27264	1490P1	..CONNECTOR BODY, PLUG	1	2
9	PAOZZ	PAOZZ		PAOZZ	63123	35-000252-001	..CONTACT, ELECTRICAL	4	15
10	PAOZA	PAOZA		PAOZA	30554	88-20062	..SWITCH, LIQUID LEVEL	1	1
11	PAOZZ	PAOZZ		PAOZZ	81205	2740-0003	.NUT, PLAIN, ASSEMBLED	2	362
12	PAOZZ	PAOZZ		PAOZZ	30554	88-20260-20	.BOLT, MACHINE	2	50
13	PAOZZ	PAOZZ		PAOZZ	30554	88-20492	.FLOAT, SWITCH, LIQU	1	1
14	XDOZZ	XB		XBOZZ	30554	88-20324	.TUBE, FUEL, AUXILIA	1	1
15	XAOZZ	XA		XAOZZ	96906	MS51531B4	..NUT, TUBE COUPLING	2	4
16	XAOZZ	XA		XAOZZ	96906	MS51533B4	..SLEEVE, FLARED, TUBE	2	4
17	XAOZZ	XA		XAOZZ	36024	999-0616-7	..TUBE	1	1
18	PAOZZ	PAOZZ		PAOZZ	81343	SAE J1508-06	.CLAMP, HOSE	2	2
19	MOOZZ	MOO		MOOZZ	19099	88-20071-300	.HOSE, NONMETALLIC MAKE FROM P/N 33H581 (80244), 17 INCHES REQUIRED	1	1
20	PAOZZ	PAOZZ		PAOZZ	5U990	205-605	.ADAPTER, STRAIGHT, TU	1	1
21	PAOZZ	PAOZZ		PAOZZ	30554	88-22755	.FILTER BODY, FLUID	1	1
22	PAOZZ	PAOZZ		PAOZZ	96906	MS51504A4	.ELBOW, PIPE TO TUBE	1	2
23	PAOZZ	PAOZZ		PAOZZ	96906	MS51412-5	.WASHER, FLAT	1	37
24	PAOZZ	PAOZZ		PAOZZ	19207	12325869	.BOLT, MACHINE	11	293
25	AOOOO	AOO		AOOOO	30554	88-22546	.PUMP ASSEMBLY, FUEL	1	1
26	PAOZZ	PAOZZ		PAOZZ	96906	MS3367-1-9	..STRAP, TIEDOWN, ELECT	1	1
27	PAOZA	PAOZA		PAOZA	27264	03-09-2022	..CONNECTOR ,PLUG ,ELEC	1	2
28	PAOZZ	PAOZZ		PAOZZ	63123	35-000252-001	..CONTACT, ELECTRICAL	2	15
29	PAOZZ	PAOZZ		PAOZZ	30554	88-21738	..PUMP, FUEL, ELECTRICA AUXILIARY	1	1
30	PAOZZ	PAOZZ		PAOZZ	81343	2-2-130238	.ELBOW, 90 DEGREE	1	1
31	PAOZZ	PAOZZ		PAOZZ	81343	4-4-4 070424S	.TEE, PIPE TO TUBE	1	1
32	PAOZZ	PAOZZ		PAOZZ	93742	69-539-2	.CAP, TUBE	2	2
33	PAOZZ	PAOZZ		PAOZZ	96906	MS87006-11	.HOOK, CHAIN,S	2	5

ARMY TM 9-6115-642-24P  
AIR FORCE TO 35C2-3-455-14  
MARINE CORPS TM 09247A/09248A-24P/3

(1) ITEM NO	(2) SMR CODE			(3) FSCM	(4) PART NUMBER	(5) DESCRIPTION AND USABLE ON CODE (UOC)	(6) QTY	(7) USMC QTY PER EQUIP	
	a. ARMY	b. AIR FORCE	c. NAVY						d. USMC
34	MOOZZ	MOO		MOOZZ	30554	88-20071-196	.CHAIN, WELDLESS MAKE FROM P/N RR-C-271TY2 CL7- 16 (81348), #14 X 4 INCHES LONG	2	2
35	PAOZZ	PAOZZ		PAOZZ	79470	695	.COCK,SHUTOFF,SCREW	1	1
36	PAOZZ	PAOZZ		PAOZZ	30554	88-21117	.ADAPTER,STRAIGHT,PI	2	2
37	PAOZZ	PAOZZ		PAOZZ	30554	88-21166	.WASHER,FLAT	2	2
38	XDOZZ	XB		XBOZZ	07707	A3816	.NUT	2	2
39	PAOZZ	PAOZZ		PAOZZ	81205	2740-0003	.NUT,PLAIN,ASSEMBLED	7	362
40	PAOZZ	PAOZZ		PAOZZ	77068	1068374-1	.CLAMP,HOSE	2	2
41	PAOZZ	PAOZZ		PAOZZ	96906	MS35645-1	.CAP,FILLER OPENING	1	1
42	XDOOO	XB		XBOOO	30554	88-20193	.FILLER NECK, FUEL	1	1
43	PAOZZ	PAOZZ		PAOZZ	96906	MS90908-1	..FILLER NECK	1	1
44	PAOZZ	PAOZZ		PAOZZ	30554	88-20208	.REDUCER,TUBE	1	1
45	PAOZZ	PAOZZ		PAOZZ	96906	MS51860-54	.LOCKNUT,TUBE FITTIN	1	1
46	PAOZZ	PAOZZ		PAOZZ	96906	MS51520A5	.ADAPTER,STRAIGHT,TU	1	1
47	PBOZZ	PBOZZ		PBOZZ	36024	88-21026	.TANK,FUEL,ENGINE	1	1
48	AOOOO	AOO		AOOOO	30554	88-20191-4	.HOSE ASSEMBLY	1	1
49	PAOZZ	PAOZZ		PAOZZ	96906	MS24587-4	..ADAPTER,STRAIGHT,TU	2	4
50	MOOZZ	MOO		MOOZZ	30554	88-20191-4-2	..HOSE, RUBBER MAKE FROM P/N M8794-4 (81349), 34 INCHES REQUIRED.	1	1
51	PAOZZ	PAOZZ		PAOZZ	96906	MS51521A4	.ELBOW,TUBE	1	1
52	PAOZZ	PAOZZ		PAOZZ	30554	88-20179	.TUBE ASSEMBLY,METAL	1	1
53	PAOZZ	PAOZZ		PAOZZ	30554	88-22790-1	.NUT,PLAIN,HEXAGON	3	93
54	PAOZZ	PAOZZ		PAOZZ	96906	MS35228-63	.WASHER,LOCK	3	2
55	PAOZZ	PAOZZ		PAOZZ	96906	MS51412-4	.WASHER,FLAT	2	86
56	PAOZZ	PAOZZ		PAOZZ	30554	88-20260-33	.BOLT,MACHINE	4	28
57	PAOZZ	PAOZZ		PAOZZ	96906	MS21333-105	.CLAMP,LOOP	1	1
58	XDOZZ	XB		XBOZZ	30554	88-20325-2	.TUBE, FUEL, PRIMARY	1	1
59	XAOZZ	XA		XAOZZ	96906	MS51531B4	..NUT,TUBE COUPLING	2	4
60	XAOZZ	XA		XAOZZ	96906	MS51533B4	..SLEEVE,FLARED,TUBE	2	4
61	XAOZZ	XA		XAOZZ	36024	999-0667-4	..TUBE	1	1
62	PBOZZ	PBOZZ		PBOZZ	96906	MS51508B4-4Z	.ELBOW,PIPE TO TUBE	1	1
63	PAOZZ	PAOZZ		PAOZZ	81343	4-4070202C	.ELBOW,PIPE TO TUBE	3	3
64	AOOOO	AOO		AOOOO	30554	88-20479	.PUMP ASSEMBLY, FUEL	1	1
65	PAOZZ	PAOZZ		PAOZZ	96906	MS3367-1-9	..STRAP,TIEDOWN,ELECT	1	1
66	PAOZZ	PAOZZ		PAOZZ	63123	35-000252-001	..CONTACT,ELECTRICAL	2	15
67	PAOZA	PAOZA		PAOZA	27264	03-09-2022	..CONNECTOR,PLUG,ELEC	1	2
68	PAOZZ	PAOZZ		PAOZZ	72850	40193	..PUMP,FUEL,ELECTRICA MAIN	1	1
69	AOOOO	AOO		AOOOO	30554	88-20191-2	.HOSE ASSEMBLY	1	1

ARMY TM 9-6115-642-24P  
 AIR FORCE TO 35C2-3-455-14  
 MARINE CORPS TM 09247A/09248A-24P/3

(1) ITEM NO	(2) SMR CODE				(3) FSCM	(4) PART NUMBER	(5) DESCRIPTION AND USABLE ON CODE (UOC)	(6) QTY	(7) USMC QTY PER EQUIP
	a. ARMY	b. AIR FORCE	c. NAVY	d. USMC					
70	PAOZZ	PAOZZ		PAOZZ	96906	MS24587-4	..ADAPTER,STRAIGHT,TU	2	4
71	MOOZZ	MOO		MOOZZ	30554	88-20191-2-2	..HOSE, RUBBER MAKE FROM P/N M8794-4 (81349), 17 INCHES R EQUIRED	1	1
72	MOOZZ	MOO		MOOZZ	30554	88-20071-172	..HOSE, NONMETALLIC MAKE FROM PIN 483666 (02280),32.0 INCHES REQUIRED	1	2
73	PAOZZ	PAOZZ		PAOZZ	28520	2326	..CLAMP,HOSE	1	11
74	PBOOZ	PBOOZ		PBOOZ	30554	88-21101	..ITEM,SPECIAL	1	1
75	PAOZZ	PAOZZ		PAOZZ	76700	85285-F	..FILTER,FLUID	1	1
76	XAOZZ	XA		XAOZZ	76700	Q-54382	..HEAD, FILTER	1	1
77	PAOZZ	PAOZZ		PAOZZ	01276	2018-2-4S	..ADAPTER,STRAIGHT PI	1	1
78	PAOZZ	PAOZZ		PAOZZ	93061	125 HB-2-2	..ADAPTER,STRAIGHT	1	1

END OF FIGURE

